

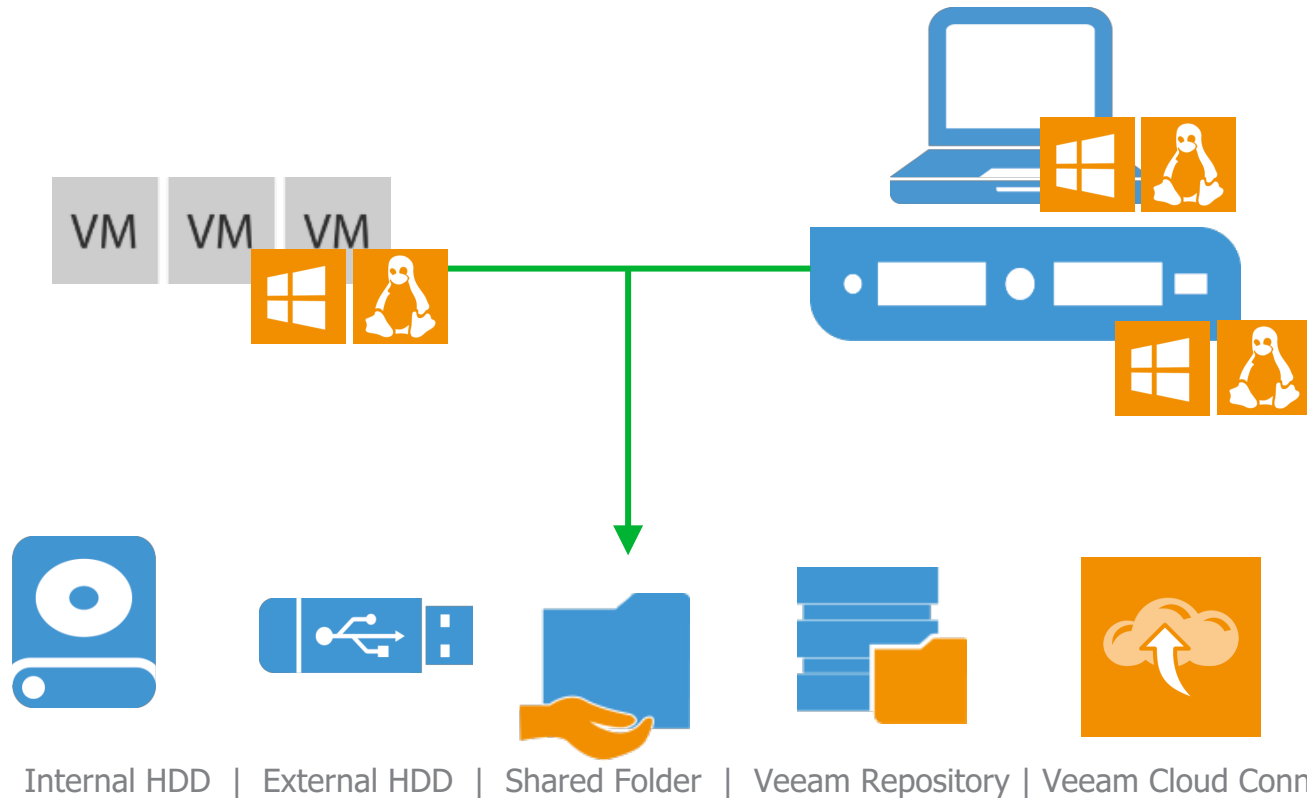


NEW Veeam **v10**
10 out of **10**
for Availability

The image features a central circular badge with a dark teal background and a bright green border. The text is centered within the circle. The background of the entire image is dark gray with several concentric teal circles and two wavy, dotted green lines that sweep across the frame from the bottom left and top right.

Veeam Agents for Linux og Windows

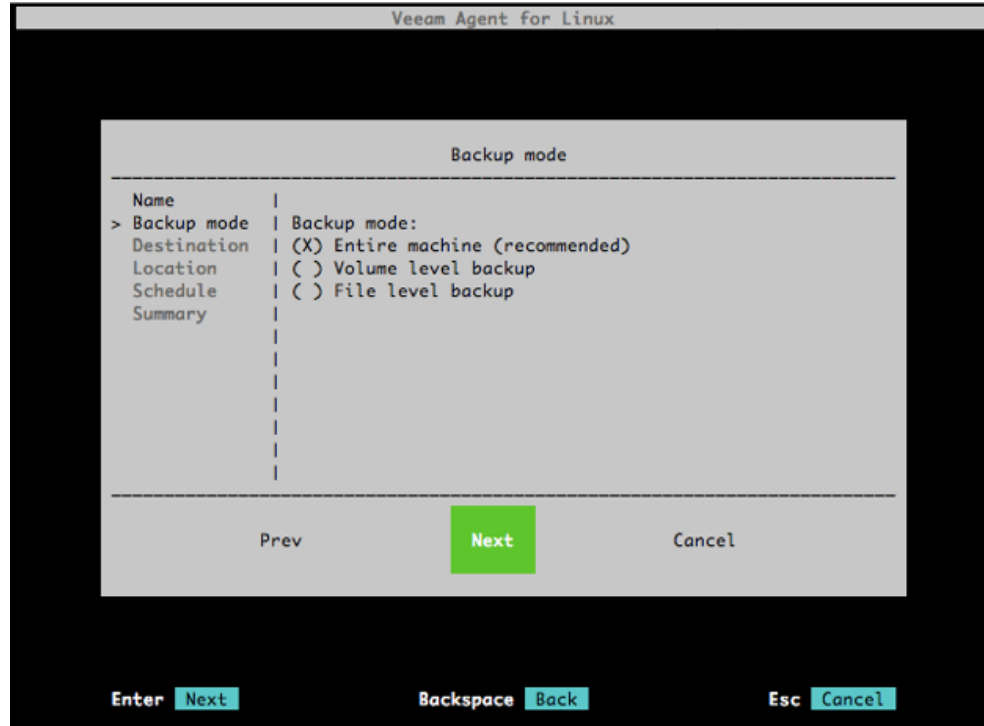
Veeam Agents for Cloud and Physical



Veeam Agent for Microsoft Windows

	Free	Workstation	Server
Instant Recovery to Microsoft Hyper-V VM	●	●	●
Direct Restore <i>to Microsoft Azure</i>	●	●	●
Source-side encryption	●	●	●
Endpoint protection for mobile users		●	●
Back up directly to Veeam Cloud Connect		●	●
Remote configuration and management API		●	●
Application-aware processing			●
Transaction log backup for databases			●
Guest file indexing and search			●
24.7.365 technical support		●	●

Veeam Agent for Linux



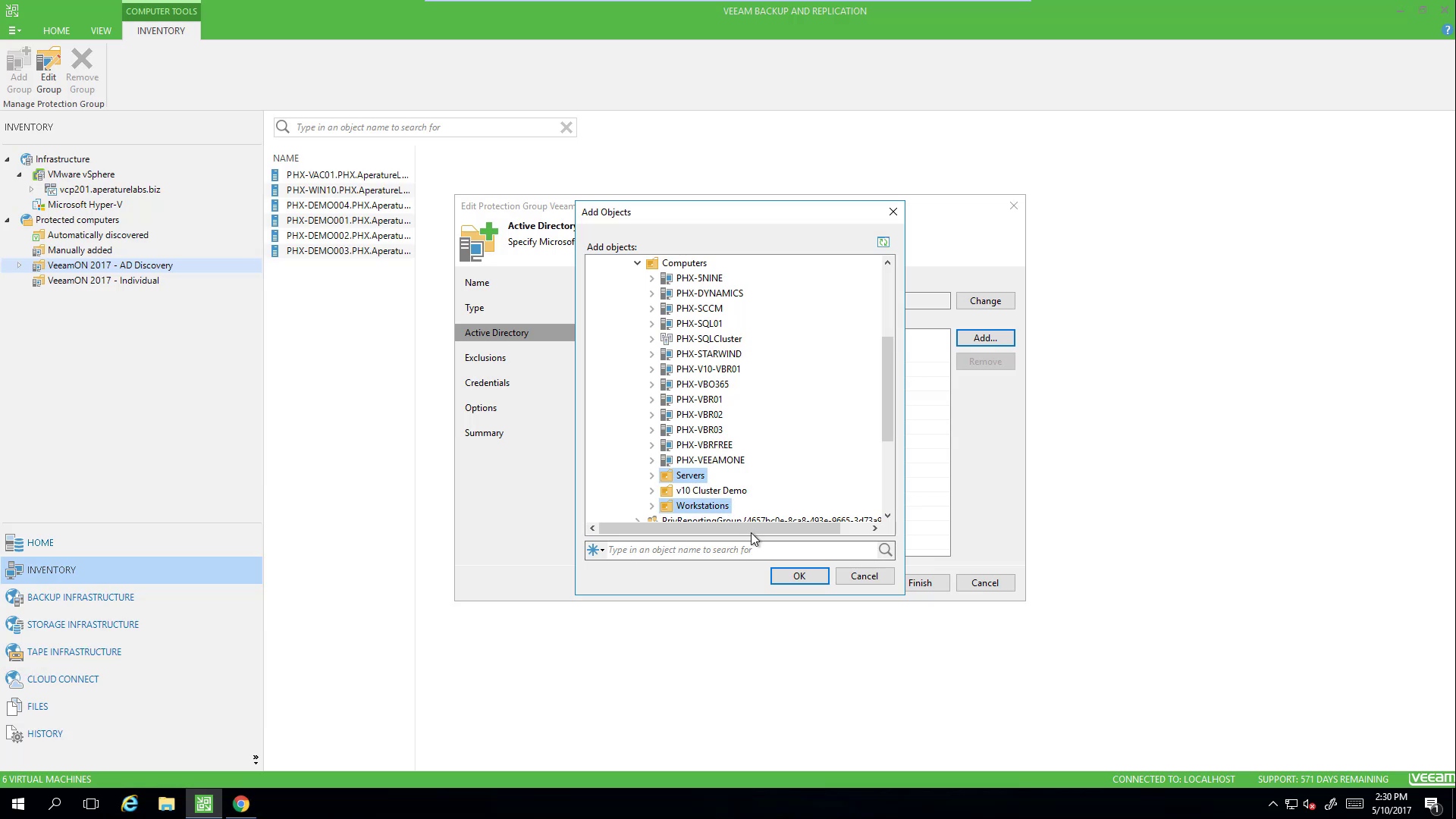
Veeam Agent for Linux

	Free	Workstation	Server
Entire computer, volume-level and file-level image-based backup	●	●	●
Built-in volume snapshot and changed block tracking drivers	●	●	●
File-level, volume-level and bare metal recovery (same or different hardware)	●	●	●
Backup and recovery using console UI or command line	●	●	●
Integration with Veeam Backup & Replication	●	●	●
Support for multiple jobs			●
Pre-freeze/post-thaw snapshot scripts for application processing			●
Guest file indexing, catalog search and restore with Veeam Backup Enterprise Manager			●
24.7.365 technical support		●	●



NEW Veeam v10
10 out of **10**
for Availability

Build-In Management for Veeam Agents



HOME

VIEW

COMPUTER TOOLS

INVENTORY

Add Group

Edit Group

Remove Group

Manage Protection Group

INVENTORY

▼ Infrastructure

▼ VMware vSphere

▼ vcp201.aperturelabs.biz

▼ Microsoft Hyper-V

▼ Protected computers

▼ Automatically discovered

▼ Manually added

▼ VeeamON 2017 - AD Discovery

▼ VeeamON 2017 - Individual

HOME

INVENTORY

BACKUP INFRASTRUCTURE

STORAGE INFRASTRUCTURE

TAPE INFRASTRUCTURE

CLOUD CONNECT

FILES

HISTORY

VEEAM BACKUP AND REPLICATION

6 VIRTUAL MACHINES

CONNECTED TO: LOCALHOST

SUPPORT: 571 DAYS REMAINING

VEEAM

2:30 PM

5/10/2017

Type in an object name to search for

- NAME
- PHX-VAC01.PHX.AperatureL...
 - PHX-WIN10.PHX.AperatureL...
 - PHX-DEMO004.PHX.Aperatu...
 - PHX-DEMO001.PHX.Aperatu...
 - PHX-DEMO002.PHX.Aperatu...
 - PHX-DEMO003.PHX.Aperatu...

Edit Protection Group VeeamON 2017 - AD Discovery

Exclusions

Specify objects to exclude from this protection group.

Name

Type

Active Directory

Exclusions

Credentials

Options

Summary

Exclude:

☐ All virtual machines

☒ All computers that have been offline for over 30 days

☒ The following objects:

Object	Type
PHX-WS2016CORE	Computer

Add...

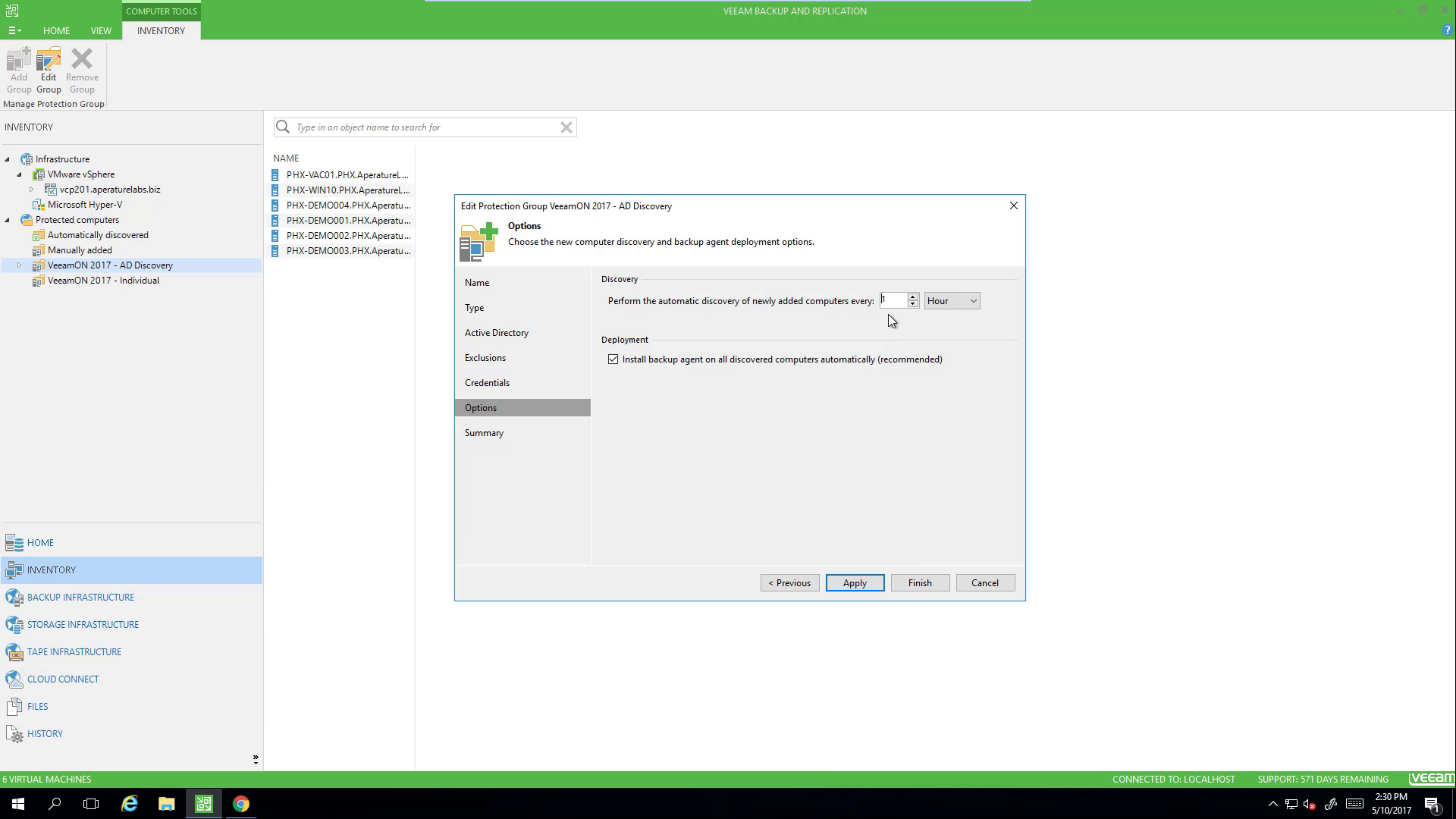
Remove

< Previous

Next >

Finish

Cancel



HOME VIEW

Backup Job ▾ Replication Job ▾ CDP Policy Primary Jobs

Tape Backup Job ▾ Copy Job ▾ SureBackup Job ▾ Auxiliary Jobs

Restore Import Backup Plan ▾ Failover Plan ▾ Restore

HOME

- Jobs
 - Backup
 - Agents
- Backups
 - Disk
- Last 24 Hours
 - Success
 - Failed

NAME	TYPE	OBJECTS	STATUS	LAST RES...	NEXT RUN	TARGET ↓	DESCRIPTION
V10 Backup Job	VMware Backup	1	Stopped	Success	<not scheduled>	VeeamON 2017 RefS	Created by PHX\svcvveeam at 5/7/2017 8:41 PM.
VeeamON Server Demo	Windows Agent Backup	2	Stopped	Success	5/7/2017 10:00:00 PM	VeeamON 2017 RefS	Created by PHX\svcvveeam at 5/7/2017 3:22 PM.
VeeamON Workstation Demo	Windows Agent Backup	1	Stopped	Success	5/8/2017 10:00:00 PM	VeeamON 2017 RefS	Created by PHX\svcvveeam at 5/7/2017 3:09 PM.

HOME

- INVENTORY
- BACKUP INFRASTRUCTURE
- STORAGE INFRASTRUCTURE
- TAPE INFRASTRUCTURE
- CLOUD CONNECT
- FILES
- HISTORY

3 JOBS

CONNECTED TO: LOCALHOST

SUPPORT: 571 DAYS REMAINING

VEEAM

2:31 PM

5/10/2017

HOME

VIEW

JOB TOOLS

Start

Stop

Retry

Statistics

Report

Edit

Clone

Disable

Delete

Job Control

Details

Manage Job

HOME

Jobs

Backup

Agents

Backups

Disk

Last 24 Hours

Success

Failed

HOME

INVENTORY

BACKUP INFRASTRUCTURE

STORAGE INFRASTRUCTURE

TAPE INFRASTRUCTURE

CLOUD CONNECT

FILES

HISTORY

VEEAM BACKUP AND REPLICATION

?

Type in an object name to search for

NAME	TYPE	OBJECTS	STATUS	LAST RES...	NEXT RUN	TARGET	DESCRIPTION
V10 Backup Job	VMware Backup	1	Stopped	Success	<not scheduled>	VeeamON 2017 RefS	Created by PHX\svcvveam at 5/7/2017 8:41 PM.
VeeamON Server Demo	Windows Agent Backup	2	Stopped	Success	5/7/2017 10:00:00 PM	VeeamON 2017 RefS	Created by PHX\svcvveam at 5/7/2017 3:22 PM.
VeeamON Workstation Demo	Windows	Edit Agent Backup Job VeeamON Server Demo					Created by PHX\svcvveam at 5/7/2017 3:09 PM.

Computers

Specify computers or active directory objects you would like to protect.

Protection Mode

Name

Computers

Backup Mode

Storage

Guest Processing

Schedule

Summary

Computers to protect:

Name	Type
PHX-VAC01.PHX.AperatureLabs.biz	Unknown
VeeamON 2017 - AD Discovery	Protection g...

Add...

Protection group...

Individual computer...

Up

Down

< Previous

Next >

Finish

Cancel

1 JOB SELECTED

CONNECTED TO: LOCALHOST

SUPPORT: 571 DAYS REMAINING

VEEAM

2:32 PM
5/10/2017

HOME

VIEW

JOB

Start

Stop

Retry

Statistics

Report

Edit

Clone

Disable

Delete

Job Control

Details

Manage Job

HOME

Jobs

Backup

Agents

Backups

Disk

Last 24 Hours

Success

Failed

HOME

INVENTORY

BACKUP INFRASTRUCTURE

STORAGE INFRASTRUCTURE

TAPE INFRASTRUCTURE

CLOUD CONNECT

FILES

HISTORY

VEEAM BACKUP AND REPLICATION

?

Type in an object name to search for

NAME	TYPE	OBJECTS	STATUS	LAST RES...	NEXT RUN	TARGET ↓	DESCRIPTION
V10 Backup Job	VMware Backup	1	Stopped	Success	<not scheduled>	VeeamON 2017 RefS	Created by PHX\svcvveam at 5/7/2017 8:41 PM.
VeeamON Server Demo	Windows Agent Backup	2	Stopped	Success	5/7/2017 10:00:00 PM	VeeamON 2017 RefS	Created by PHX\svcvveam at 5/7/2017 3:22 PM.
VeeamON Workstation Demo	Windows	Edit Agent Backup Job VeeamON Server Demo					Created by PHX\svcvveam at 5/7/2017 3:09 PM.

Backup Mode

Choose what data you want to backup from selected computers.

Protection Mode

Name

Computers

Backup Mode

Storage

Guest Processing

Schedule

Summary

Choose the backup type:

☒ Entire computer

Backup the entire computer image for fast recovery on any level. Deleted, temporary and page files are automatically excluded from the image to reduce the backup size.

☐ Selected volumes, folders or files only

Backup the specified file system objects only. Deleted, temporary and page files are automatically excluded from the image to reduce the backup size.

< Previous

Next >

Finish

Cancel

1 JOB SELECTED

CONNECTED TO: LOCALHOST

SUPPORT: 571 DAYS REMAINING

VEEAM

2:32 PM

5/10/2017

HOME

VIEW

JOB

Start

Stop

Retry

Statistics

Report

Edit

Clone

Disable

Delete

Job Control

Details

Manage Job

HOME

Jobs

Backup

Agents

Backups

Disk

Last 24 Hours

Success

Failed

HOME

INVENTORY

BACKUP INFRASTRUCTURE

STORAGE INFRASTRUCTURE

TAPE INFRASTRUCTURE

CLOUD CONNECT

FILES

HISTORY

VEEAM BACKUP AND REPLICATION

1 JOB SELECTED

TYPE

OBJECTS

STATUS

LAST RES...

NEXT RUN

TARGET

DESCRIPTION

V10 Backup Job

VMware Backup

1

Stopped

Success

<not scheduled>

VeeamON 2017 ReFS

Created by PHX\svcveeam at 5/7/2017 8:41 PM.

VeeamON Server Demo

Windows Agent Backup

2

Stopped

Success

5/7/2017 10:00:00 PM

VeeamON 2017 ReFS

Created by PHX\svcveeam at 5/7/2017 3:22 PM.

VeeamON Workstation Demo

Windows

Created by PHX\svcveeam at 5/7/2017 3:09 PM.

+

V

Storage

Specify backup repository to store the backup files produced by this job and customize advanced job settings if required.

Protection Mode

Backup repository:

VeeamON 2017 ReFS (Created by PHX\svcveeam at 5/7/2017 3:07 PM.)

Name

432 GB free of 499 GB

Computers

Retention policy

Backup Mode

Restore points to keep on disk: 14

Storage

Guest Processing

Schedule

Summary

Advanced job settings include backup mode, compression and deduplication, block size, notification settings, automated post-job activity and other settings.

Advanced

< Previous

Next >

Finish

Cancel

Start

Stop

Retry

Statistics

Report

Edit

Clone

Disable

Delete

Job Control

Details

Manage Job

HOME

VIEW

JOB TOOLS

1 JOB SELECTED

CONNECTED TO: LOCALHOST

SUPPORT: 571 DAYS REMAINING

VEEAM

Jobs

Backup

Agents

Backups

Disk

Last 24 Hours

Success

Failed

HOME

INVENTORY

BACKUP INFRASTRUCTURE

STORAGE INFRASTRUCTURE

TAPE INFRASTRUCTURE

CLOUD CONNECT

FILES

HISTORY

NAME

TYPE

OBJECTS

STATUS

LAST RES...

NEXT RUN

TARGET

DESCRIPTION

V10 Backup Job

VMware Backup

1

Stopped

Success

<not scheduled>

VeeamON 2017 RefS

Created by PHX\svcvveam at 5/7/2017 8:41 PM.

VeeamON Server Demo

Windows Agent Backup

2

Stopped

Success

5/7/2017 10:00:00 PM

VeeamON 2017 RefS

Created by PHX\svcvveam at 5/7/2017 3:22 PM.

VeeamON Workstation Demo

Windows

Created by PHX\svcvveam at 5/7/2017 3:09 PM.

Guest Processing

Choose guest OS processing options available for running computers.

Protection Mode

☒ Enable application-aware processing

Detects and prepares applications for consistent backup, performs transaction logs processing, and configures the OS to perform required application restore steps upon first boot.

Customize application handling options for individual VMs and applications

Applications...

Name

Computers

Backup Mode

Storage

Guest Processing

☐ Enable guest file system indexing

Creates catalog of guest files to enable browsing, searching and 1-click restores of individual files. Indexing is optional, and is not required to perform instant file level recoveries.

Customize advanced guest file system indexing options for individual VMs

Indexing...

Schedule

Summary

< Previous

Next >

Finish

Cancel

Start

Stop

Retry

Statistics

Report

Edit

Clone

Disable

Delete

Job Control

Details

Manage Job

HOME

VIEW

JOB TOOLS

JOB

Jobs

Backup

Agents

Backups

Disk

Last 24 Hours

Success

Failed

HOME

INVENTORY

BACKUP INFRASTRUCTURE

STORAGE INFRASTRUCTURE

TAPE INFRASTRUCTURE

CLOUD CONNECT

FILES

HISTORY

NAME

TYPE

OBJECTS

STATUS

LAST RES...

NEXT RUN

TARGET

DESCRIPTION

V10 Backup Job

VMware Backup

1

Stopped

Success

<not scheduled>

VeeamON 2017 RefS

Created by PHX\svcveeam at 5/7/2017 8:41 PM.

VeeamON Server Demo

Windows Agent Backup

2

Stopped

Success

5/7/2017 10:00:00 PM

VeeamON 2017 RefS

Created by PHX\svcveeam at 5/7/2017 3:22 PM.

VeeamON Workstation Demo

Windows

Edit Agent Backup Job VeeamON Server Demo

Created by PHX\svcveeam at 5/7/2017 3:09 PM.

Schedule

Specify the policy scheduling options. If you do not set the schedule, the policy will need to be controlled manually.

Protection Mode

☒ Run the job automatically

Name

☒ Daily at this time:

10:00 PM

everyday

Days...

☐ Monthly at this time:

10:00 PM

fourth

Saturday

Months...

☐ Periodically every:

1

hours

Schedule...

☐ After this job:

V10 Backup Job (Created by PHX\svcveeam at 5/7/2017 8:41 PM.)

Computers

Backup Mode

Storage

Guest Processing

Schedule

Summary

Automatic retry

☒ Retry failed items processing:

3

times

Wait before each retry attempt for:

10

minutes

Backup window

☐ Terminate job if it exceeds allowed backup window

Window...

If the job does not complete within allocated backup window, it will be terminated to prevent extra I/O activity during production hours.

< Previous

Apply

Finish

Cancel

1 JOB SELECTED

CONNECTED TO: LOCALHOST

SUPPORT: 571 DAYS REMAINING

VEEAM

2:32 PM

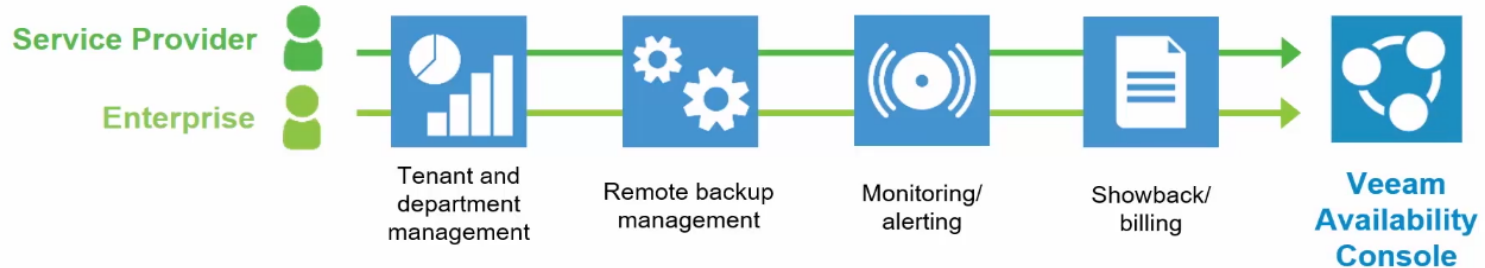
5/10/2017



Veeam Availability
console

Enterprise and Service Providers

Service providers and enterprise organizations operate and share many of the same characteristics



Multi-tenant Portal

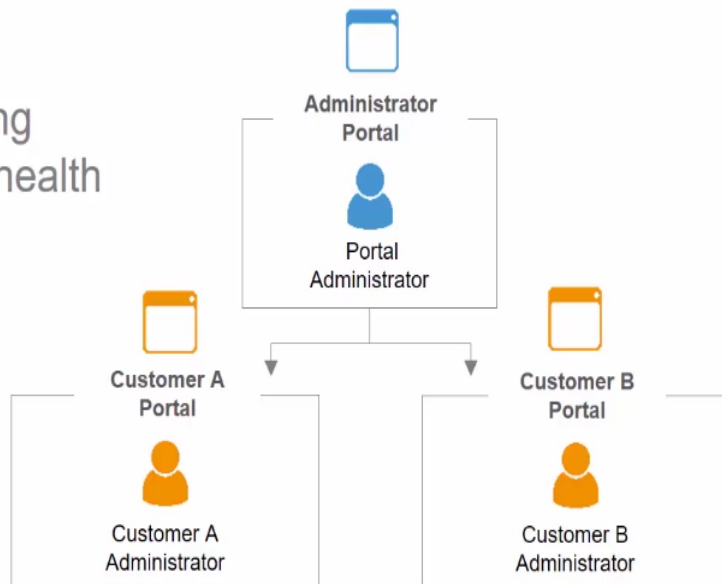
Two intuitive portals over a single URL for administration and self-service

Administrator

- Remote job management and monitoring
- Check customer backup infrastructure health
- Showback/billing

Customer

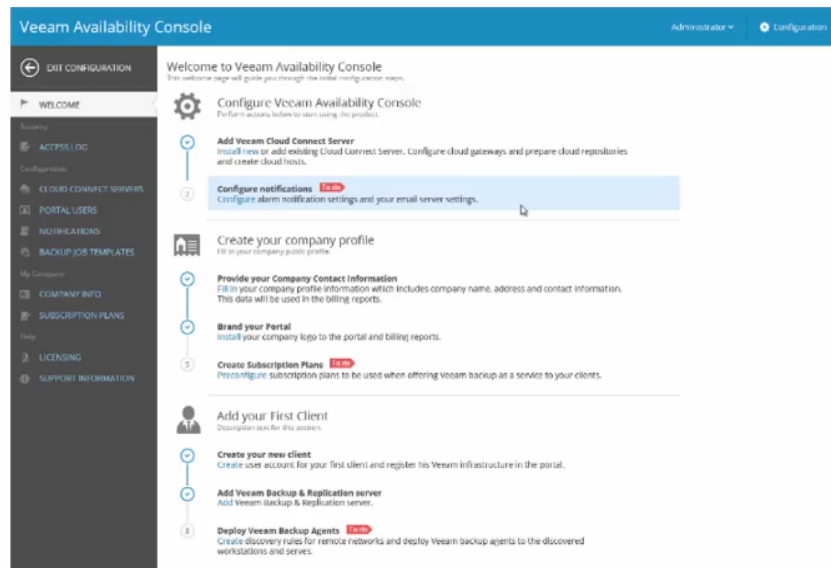
- Self-service job management and configuration
- Review resource consumption
- View invoices



Simplified Onboarding

Simplified configuration and customer setup

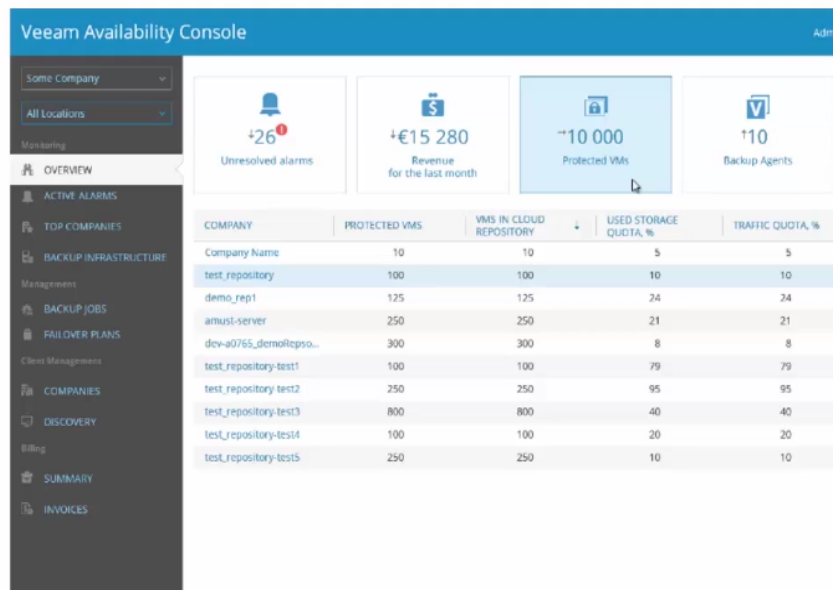
- Deploy backup agents
- Differentiate and manage distributed locations
- Create users and assign roles



Management and Monitoring

Centralized remote management, monitoring and alerting through a single UI

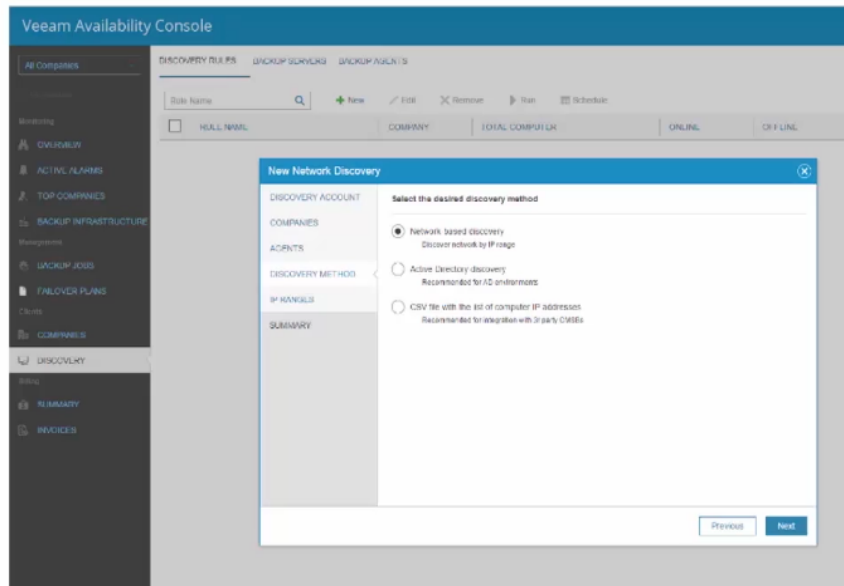
- Virtual workloads
- Physical workstations and servers
- Cloud-hosted workloads
- Primary data center
- Remote office and branch office
- Service provider customers



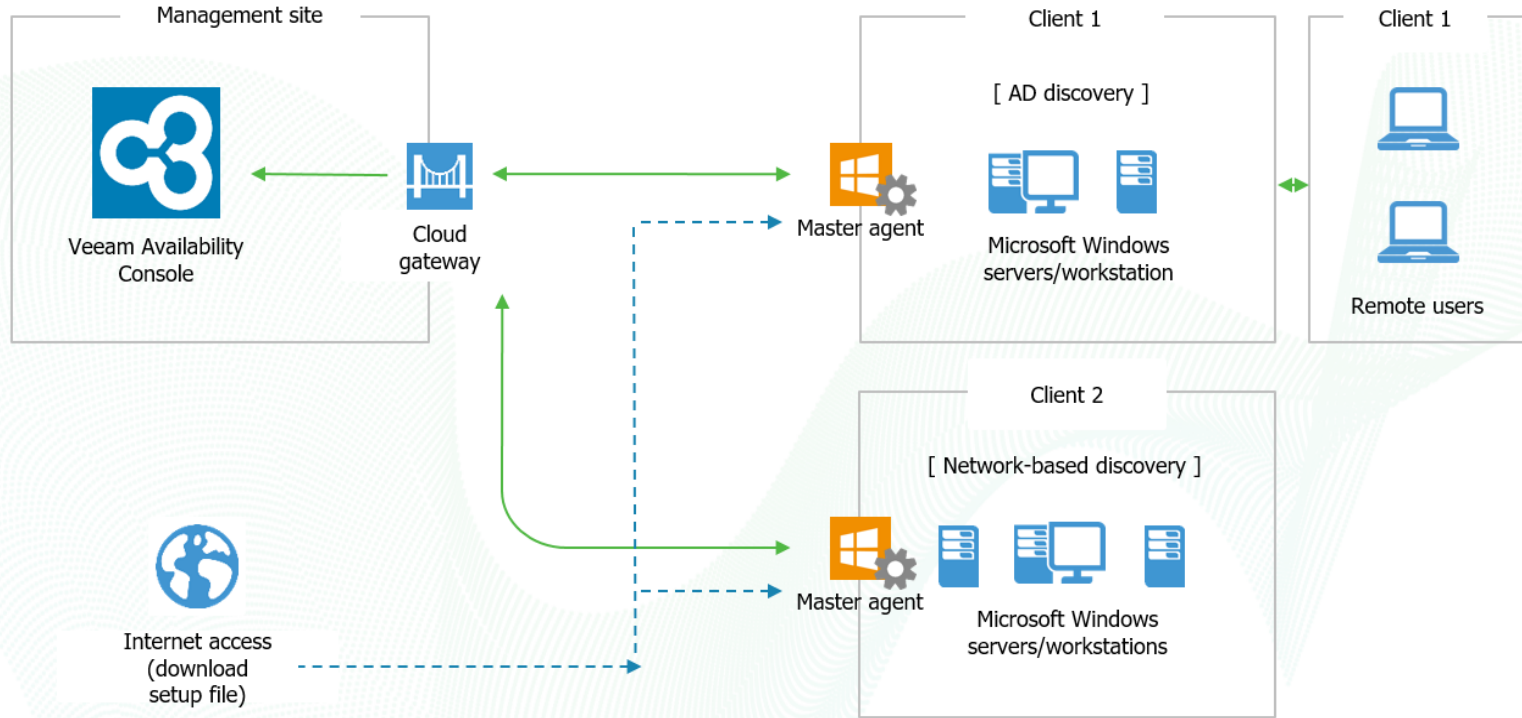
Discovery and Deployment

Easily discover deploy Veeam Agents to physical and cloud-hosted servers and workstations

- IP address range
- Active Directory integrated
- Plain text file (.csv)



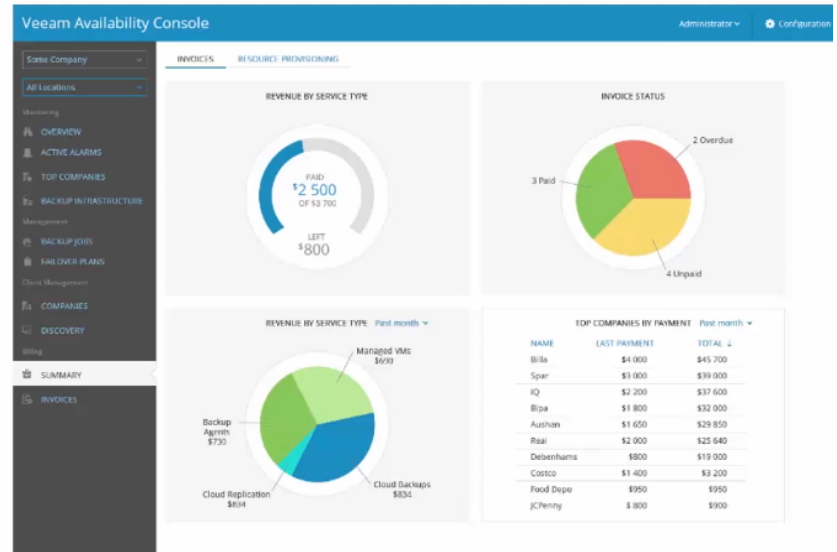
Discovery rules: How does it work?



Billing and Showback

Powerful and easy reporting capabilities for billing/chargeback, showback and resource provisioning

- Charge by fixed fees or per-VM, per-Agent, or cloud resource consumption
- Set and review quotas for departmental/customer usage
- Custom branded portal and invoicing
- RESTful API to integrate with other billing systems



Invoice ID 564454

23 August 2016

Logo

PAYMENT DUE BY:

23 September 2016

FROM:

Veeam Software
Fabrikam, Inc.
1234 First Street
Forest, OR 12345

TO:

Adventure Works
23456 Maple Street
Orange Grove, CA 09876

SUMMARY

Price per, \$:

Managed services	1 000.00	Managed services, \$	1 000.00
Managed VMs	14.95	Total gross, \$	3 000.00
Managed Servers	9.95	VAT (7%), \$	6 623.75
Managed Workstations	9.95	Discount (5%), \$	4 731.25
Cloud Repository Usage	14.95		
Download Traffic	14.95		
Backups in Cloud Repository	9.95		
VMs Replicated to Cloud Host	9.95		
Cloud Storage Usage	9.95		
Compute Time Usage	9.95		

INVOICE TOTAL 14 000.00

GENERAL

Location	Managed VMs	Managed Servers	Managed Workstations
Saint Petersburg	2 000	700	100
Oslo	1 000	600	1 000
New York	1 000	600	500
		Total gross, \$	94 625.00
		VAT (7%), \$	6 623.75
		Discount (5%), \$	4 731.25
		Total, \$	92 732.50

CLOUD BACKUPS

Location	Cloud Repository Usage, GB	Download Traffic, GB	Backups in Cloud Repository
Saint Petersburg	1 000.0	1 000.0	200
Oslo	2 000.0	1 000.0	150
New York	1 000.0	1 000.0	150
		Total gross, \$	3 000.00
		VAT (7%), \$	210.00
		Discount (5%), \$	150.00
		Total, \$	2 940.00

1 of 3

CLOUD VM REPLICAS:

Location	VMs Replicated to Cloud Host	Cloud Storage Usage, GB	Compute Time Usage, hrs
Saint Petersburg	2 000	700	100
Oslo	1 000	600	1 000
New York	1 000	600	500
		Total gross, \$	94 625.00
		VAT (7%), \$	6 623.75
		Discount (5%), \$	4 731.25
		Total, \$	92 732.50

DETAILS

Saint Petersburg

GENERAL

Date	Managed VMs	Managed Servers	Managed Workstations
03.08.2016	350	50	20
04.08.2016	1 050	50	15
05.08.2016	110	100	5
06.08.2016	90	30	40
07.08.2016	80	70	0
08.08.2016	20	200	0
09.08.2016	100	100	0
10.08.2016	130	0	0
11.08.2016	70	0	0



CLOUD BACKUPS

Date	Cloud Repository Usage, GB	Download Traffic, GB	Backups in Cloud Repository
03.08.2016	350	50	20
04.08.2016	1 050	50	15
05.08.2016	110	100	5
06.08.2016	90	30	40
07.08.2016	80	70	0
08.08.2016	20	200	0
09.08.2016	100	100	0
10.08.2016	130	0	0
11.08.2016	70	0	0


CLOUD VM REPLICAS

Date	VMs Replicated to Cloud Host	Cloud Storage Usage, GB	Compute Time Usage, hrs
03.08.2016	350	350	20
04.08.2016	1 050	1 050	15
05.08.2016	110	110	50





2 of 3

 Exit Configuration Getting Started



Audit

 Event Log



Configuration

 Cloud Connect Server Portal Users Notifications Backup Policies

My Company

 Company Info Chargeback Templates

Help

 Licensing Support information

Welcome to Veeam Availability Console

This welcome page will guide you through the initial configuration steps.



Configure Veeam Availability Console

Perform action below to start using the product.



Add Veeam Cloud Connect Server

[Install new](#) or add existing Cloud Connect Server. Configure cloud gateways, prepare cloud repositories and create cloud hosts.



Configure notifications **To do**

[Configure](#) alarm notification settings and your email server settings.



Create your company profile

Fill in your company public profile.



Provide your Company Contact Information

[Fill in](#) your company profile information which includes company name, address and contact information.



Brand your Portal **To do**

[Install](#) your company logo to the portal and billing reports.



Create Chargeback Templates

[Preconfigure](#) chargeback template to be used by company departments.



Add first client

Start providing Veeam backup as a service.



Create your new client

[Create](#) user account for your department and register its Veeam infrastructure in the portal



Add Veeam Backup & Replication server

[Add](#) Veeam Backup & Replication server that you want to manage remotely.

All Departments

All Locations

Monitoring

Overview

Active Alarms

Top Departments

Backup Infrastructure

Management

Backup Jobs

Failover Plans

Clients

Departments

Discovery

Reporting

Chargeback Summary

Chargeback Reports

Backup Reports

Department Name



+ New

Edit

X Remove

Enable

Disable

Send Registration Email

Assign Chargeback Template

Name

☐ Customer☐ HQ☐ VAC-Demo

New Department



Department Info

User Info

Backup Resources

Replica Resources

Chargeback

Bandwidth

Summary

Select the desired chargeback template

+ Create New...

☒ BaaS☐ Chargeback template example☐ Default chargeback template☐ Foobar☐ Test

All Companies

All Locations

Monitoring

Overview

Active Alarms

Top Companies

Backup Infrastructure

Management

Backup Jobs

Failover Plans

Clients

Companies

Discovery

Reporting

Billing Summary

Invoices

Reports

Rules

Discovered Computers

Backup Agents

Backup Servers

[TBD] Rule Name



+ New

Edit

Remove

Run

Schedule

[TBD] View Computers

[TBD] State

[TBD]

Success

Bead S

[TBD] Rule name

Locations

[TBD] Discovery Method

[TBD] AD Query

Discovery filters

[TBD] Discovery Account

[TBD] Email Notification

[TBD] VAW Installation

Summary

[TBD] Select the desired discovery method

☐ [TBD] Network-based discovery

Discover network by IP range

☒ [TBD] Active Directory discovery

Recommended for AD environments

☐ [TBD] CSV file with the list of computer IP addresses

Recommended for integration with 3rd party CMSBs

Back

Next

Finish

Cancel

[illegible]

All Companies

All Locations

Monitoring

Overview

Active Alarms

Top Companies

Backup Infrastructure

Management

Backup Jobs

Failover Plans

Clients

Companies

Discovery

Reporting

Billing Summary

Invoices

Reports

Rules

Discovered Computers

Backup Agents

Backup Servers

Rule Bead Shop, Inc.

Hostname



[TBD]Filter options (All)

Install Backup Agent...

Auto deployment: Off

[Change Settings...](#)

VAC Agent

Download Agent

Export

<input type="checkbox"/>	Rule Name	Platform	Hostname	↑ Guest OS	Application	Connection Status	Agent Deployment	Deploymen...	Agent Status	000
<input checked="" type="checkbox"/>	Bead Shop, Inc.	vSphere	phx-dc1.PHX.AperatureL...	Microsoft Windows Serv...	Microsoft Active Directo...	Online	-	-	-	
<input checked="" type="checkbox"/>	Bead Shop, Inc.	vSphere	PHX-SNine.PHX.Aperatu...	Microsoft Windows Serv...	Other	Online	-	-	-	
<input type="checkbox"/>	Bead Shop, Inc.	vSphere	PHX-Cluster1.PHX.Apera...	Microsoft Windows Serv...	Microsoft SQL Server	Online	Success	<div><div>100%</div></div>	Installed	
<input type="checkbox"/>	Bead Shop, Inc.	vSphere	PHX-Cluster2.PHX.Apera...	Microsoft Windows Serv...	Microsoft SQL Server	Online	Success	<div><div>100%</div></div>	Installed	
<input type="checkbox"/>	Bead Shop, Inc.	vSphere	PHX-Cluster3.PHX.Apera...	Microsoft Windows Serv...	Microsoft SQL Server	Online	Success	<div><div>100%</div></div>	Installed	
<input type="checkbox"/>	Bead Shop, Inc.	vSphere	PHX-Demo001.PHX.Ape...	Microsoft Windows Serv...	Other	Online	-	-	-	
<input type="checkbox"/>	Bead Shop, Inc.	vSphere	PHX-Demo002.PHX.Ape...	Microsoft Windows Serv...	Other	Online	-	-	-	
<input type="checkbox"/>	Bead Shop, Inc.	vSphere	PHX-Demo003.PHX.Ape...	Microsoft Windows Serv...	Other	Online	-	-	-	
<input type="checkbox"/>	Bead Shop, Inc.	vSphere	PHX-Demo004.PHX.Ape...	Microsoft Windows Serv...	Other	Online	-	-	-	
<input type="checkbox"/>	Bead Shop, Inc.	vSphere	PHX-Dynamics.PHX.Ape...	Microsoft Windows Serv...	Other	Online	Success	<div><div>100%</div></div>	Installed	
<input type="checkbox"/>	Bead Shop, Inc.	vSphere	PHX-SCCM.PHX.Aperatu...	Microsoft Windows Serv...	Applications...	Online	-	-	-	
<input type="checkbox"/>	Bead Shop, Inc.	vSphere	PHX-SQL01.PHX.Aperatu...	Microsoft Windows Serv...	Microsoft SQL Server	Online	-	-	-	
<input type="checkbox"/>	Bead Shop, Inc.	N/A	PHX-Starwind.PHX.Aper...	N/A	N/A	Offline	-	-	-	
<input type="checkbox"/>	Bead Shop, Inc.	vSphere	PHX-v10-VBR01.PHX.Ape...	Microsoft Windows Serv...	Microsoft SQL Server	Online	-	-	-	
<input type="checkbox"/>	Bead Shop, Inc.	vSphere	PHX-VAC01.PHX.Aperatu...	Microsoft Windows Serv...	Other	Online	-	-	-	
<input type="checkbox"/>	Bead Shop, Inc.	vSphere	PHX-VBO365.PHX.Apera...	Microsoft Windows Serv...	Other	Online	-	-	-	
<input type="checkbox"/>	Bead Shop, Inc.	vSphere	PHX-VBR01.PHX.Aperatu...	Microsoft Windows Serv...	Other	Online	-	-	Installed	

[Exit Configuration](#)

Policy name



Type:



Policy Type:

[Getting Started](#)[Audit](#)[Event Log](#)[Configuration](#)[Cloud Connect Server](#)[Portal Users](#)[Notifications](#)[Backup Policies](#)[My Company](#)[Company Info](#)[Subscription Plans](#)[Help](#)[Licensing](#)[Support information](#)[+ New](#) [Edit](#) [Copy](#)

Name

Bead Shop, Inc (Cloud Connect)

Bead Shop, Inc. - Server

Bead Shop, Inc. (SQL Server)

Edit Backup Policy



Backup Policy Name

Operation Mode

Backup Mode

Destination

Backup Server

Backup Repository

Backup Cache

Guest Processing

Schedule

Summary

Choose what data do you want to backup from this computer

☒ Entire computer (recommended)

Back up your entire computer image for fast recovery on any level. Deleted, temporary and page files are automatically excluded from the image to reduce the backup size.

☐ Volume level backup

Back up images of selected volumes, for example only data volumes. Deleted, temporary and page files are automatically excluded from the image to reduce the backup size.

☐ File level backup (slower)

Back up individual files and folders by mask. This mode produces an image-based backup with only selected files included in the image.

Description

All Companies

All Locations

Monitoring

Overview

Active Alarms

Top Companies

Backup Infrastructure

Management

Backup Jobs

Failover Plans

Clients

Companies

Discovery

Reporting

Billing Summary

Invoices

Reports

Rules

Discovered Computers

Backup Agents

Backup Servers

Hostname

Status:



Filter (All)

Backup Policy: Assign... Get Latest Config Set Location Update Backup Agent Delete Backup Agent Activation

Export

Backup Policies

Backup policy



Type:

Servers

Workstations

Assign + Create New...

Name

Type

Description

Bead Shop, Inc (Cloud Connect)

Server

Bead Shop, Inc. - Server

Server

Bead Shop, Inc. (SQL Server)

Server

Operation Mode

Backup Policy

Workstation

Not assigned

Workstation

Not assigned

Workstation

Not assigned

Workstation

Not assigned

Workstation

Not assigned

Workstation

Not assigned

Workstation

Not assigned

Server (TBD)Managed

[TBD]Custom [Bead Shop, Inc. - S...

Server (TBD)Managed

[TBD]Failed to apply

Server (TBD)Managed

[TBD]Custom [Bead Shop, Inc. - S...

Server (TBD)Managed

[TBD]Custom [Bead Shop, Inc. - S...

Server (TBD)Managed


[TBD]Custom [Bead Shop, Inc. - S...


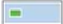
Server (TBD)Managed

[TBD]Custom [Bead Shop, Inc. (S...

Workstation

Bead Shop, Inc (Cloud Connect)

 **Configure Backup** ✕

Backup Mode
Choose what data you want to backup from this computer.

Backup Mode

Destination

Service Provider

Credentials

Backup Resources

Backup Cache

Guest Processing

Schedule

Backup mode:

☒ **Entire computer (recommended)**
Back up your entire computer image for fast recovery on any level. Deleted, temporary and page files are automatically excluded from the image to reduce the backup size.

☐ **Volume level backup**
Back up images of selected volumes, for example only data volumes. Deleted, temporary and page files are automatically excluded from the image to reduce the backup size.

☐ **File level backup (slower)**
Back up individual files and folders by mask. This mode produces an image-based backup with only selected files included in the image.

< Previous

Next >

Finish

Cancel

All Departments ▾

All Locations ▾

Monitoring

🏠 Overview

🔔 Active Alarms

🏢 Top Departments

🖨️ Backup Infrastructure

Management

🔧 Backup Jobs

📁 Failover Plans

Clients

🏢 Departments

🖨️ Discovery

Reporting

Backup Servers

Backup Agents



Status:



🔽 [TBD]Filter options (All)



Start



Stop



Retry



Enable



Disable



Download Logs



Manage Job



E:

<input checked="" type="checkbox"/>	Job Name	Server Name	Job Status	↑ Type	Last Run	Duration	Transferred Data
<input checked="" type="checkbox"/>	ReFS volume replica test	HQ-VBR2	🟢 Success	Backup	10/5/2017 10:00 AM	1 minutes 17 seconds	110.8 MB

All Departments ▾

All Locations ▾

Monitoring

Overview

Active Alarms

Top Departments

Backup Infrastructure

Management

Backup Jobs

Failover Plans

Clients

Departments

Discovery

Reporting

Chargeback Summary

Chargeback Reports

Backup Reports

Clients Infrastructure

Cloud Connect Infrastructure

Latest Alarms

Status	Department	Computer Name	Alarm Name	Object	Time
Error	HQ	hq-vbr2	Repository free space	Cloud Connect Repository	9/24/2017 11:18 PM
Error	HQ	hq-vac2	Department cloud storage quota	HQ	9/24/2017 10:53 PM

Knowledge Base



Knowledge

Department is running out of cloud storage quota

Cause

Department is running out of cloud storage quota because of the increased number of VM backups that are sent to the cloud repository

Resolution

Increase cloud storage quota for the department or adjust the number of VMs that should be stored in the cloud repository

Close

All Departments ▾

All Locations ▾

Monitoring

Overview

Active Alarms

Top Departments

Backup Infrastructure

Management

Backup Jobs

Failover Plans

Clients

Departments

Discovery

Reporting

Chargeback Summary





Chargeback Reports

Backup Reports



Clients Infrastructure

Cloud Connect Infrastructure



Latest Alarms

Status	Computer Name	Alarm Name	Object	Time
 Warning	hq-vac2	Portal license expiration	hq-vac2	10/1/2017 1:06 AM
 Warning	hq-vbrcc2	Backup server support contract expiration	HQ-VBRCC2	9/30/2017 10:00 PM
 Warning	hq-vbrcc2	Backup server license expiration	HQ-VBRCC2	9/30/2017 10:00 PM
 Error	hq-vac2	[TBD]VAC License exceeded	hq-vac2	9/24/2017 7:10 PM

Cloud Connect Infrastructure

Object	Health State		
Cloud Connect Server	 1	 0	 0
Cloud Gateway	 1	 0	 0
Backup Repository	 2	 0	 0
Backup Proxy	 1	 0	 0

Repositories

Name	Capacity	Free space	Backup Size	Cloud Repositories	Health State
Cloud Connect Repository	499.9 GB	401.1 GB	95.7 GB	3	 OK
Configuration Backup Repository	499.9 GB	401.1 GB	0	0	 OK

beadshop

All Locations

Monitoring

Overview

Active Alarms

Top Companies

Backup Infrastructure

Management

Backup Jobs

Failover Plans

Clients

Companies

Discovery

Reporting

Billing Summary

Invoices

Reports

All Reports

Report Configuration

Report name



Type:

[+ New](#) [Edit](#) [Remove](#) [Run](#)

<input type="checkbox"/>	Report Name	Company	Locations	Report Type	Schedule	Generated On	Next Run	Company State	State	...
<input type="checkbox"/>	BeadShop	beadshop	Columbus OH	Backup Agent Report	Everyday	5/12/2017 11:00 AM	5/13/2017 11:00 AM	Active	Success	
<input checked="" type="checkbox"/>	Protected Computers	beadshop	Default location, Colum...	Backup Agent Report	Everyday	-	5/13/2017 8:00 AM	Active	Created	

All Locations

Monitoring

Summary

Active Alarms

Protected Computers

Management

Backup Jobs

Failover Plans

Discovery

Rules

Managed Computers

Reporting

Invoices

Reports

Quotas

Virtual Infrastructure

Cloud Host Usage

Physical Infrastructure

Protected VMs



VMs by Backup Type



VMs by Backup Copies



All Locations

Monitoring

Summary

Active Alarms

Protected Computers

Management

Backup Jobs

Failover Plans

Discovery

Rules

Managed Computers

Reporting

Invoices

Reports

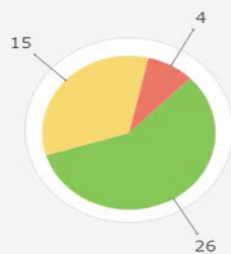
Quotas

Virtual Infrastructure

Cloud Host Usage

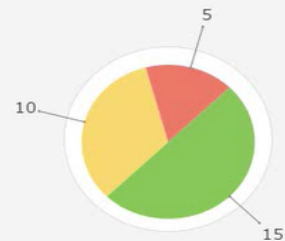
Physical Infrastructure

Protected Servers



Success Warning Failed

Protected Workstations



Success Warning Failed

Endpoints by Backup Target





Thank you